

STATE OF NORTH CAROLINA
DEPARTMENT OF TRANSPORTATION
HIGHWAY DIVISION 6

PLANS
Letting Date: June 4, 2025

CONTRACT ID: DF00521

TIP NO.: -----

FEDERAL AID NO.: STATE FUNDED

WBS ELEMENT NO.: 6C.024127 & 6C.024128

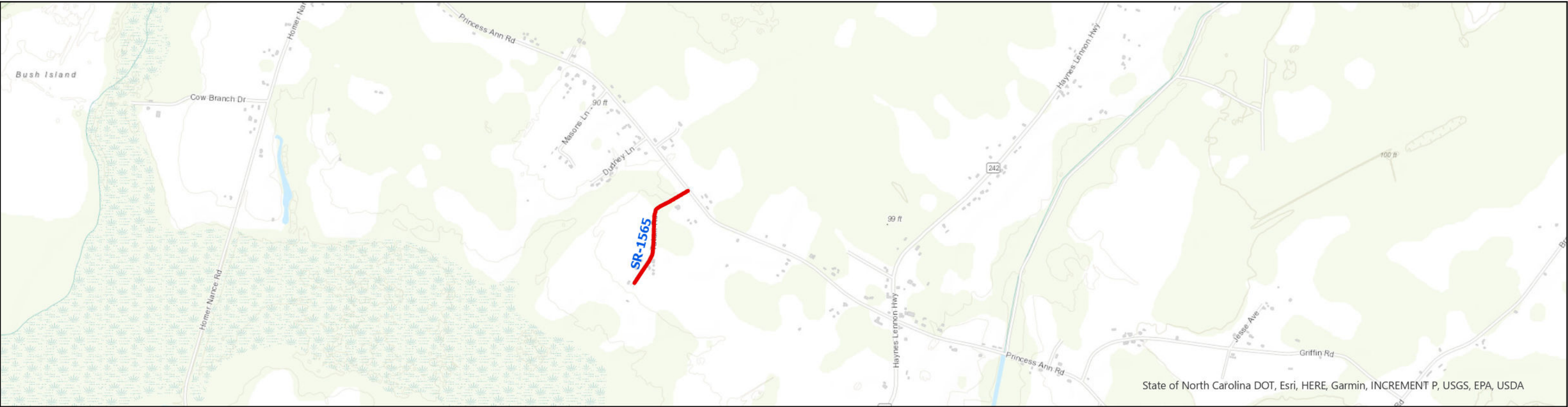
ROUTE NO.: SR-1565 / TATUM RD & SR-1819 / JUSTICE FLYNN RD

LOCATION: VARIES

COUNTY: COLUMBUS

LENGTH OF PROJECT: 1.07 MILES

TYPE OF WORK: FINE GRADING & PAVING



Tatum Rd and Justice Flynn Rd Columbus County

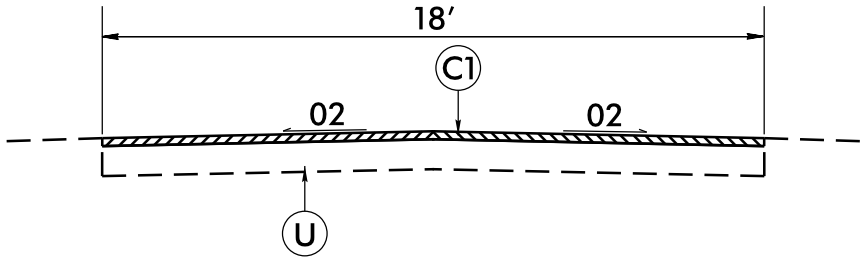
0 0.1 0.2 0.4 Miles

Tatum Rd WBS: 6C.024127
Justice Flynn Rd WBS_: 6C.024128



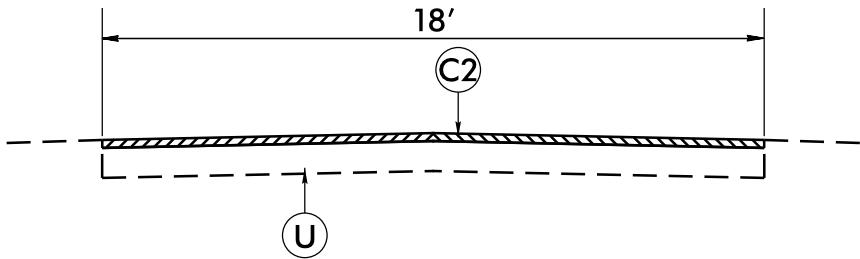
6/2/99
13-MAY-2025 13:56
S:\PROJECTS\2025\Resurfacing\DF00521-6C.024127.etc-Tatum Rd Justice Flynn Rd.Columbus\Plans\typ2.dgn
S:\PROJECTS\2025\Resurfacing\DF00521-6C.024127.etc-Tatum Rd Justice Flynn Rd.Columbus\Plans\typ2.dgn

PAVEMENT SCHEDULE	
C1	3" ASPHALT CONCRETE SURFACE COURSE, TYPE S9.5B, AT AN AVERAGE RATE OF 330 LBS. PER SQ. YD.
C2	1¾" ASPHALT CONCRETE SURFACE COURSE, TYPE S9.5B, AT AN AVERAGE RATE OF 192.5 LBS. PER SQ. YD.
U	EXISTING TO BE FINE GRADED



TYPICAL SECTION NO. 1

SHOULDERS TO BE DONE BY STATE FORCES



TYPICAL SECTION NO. 2

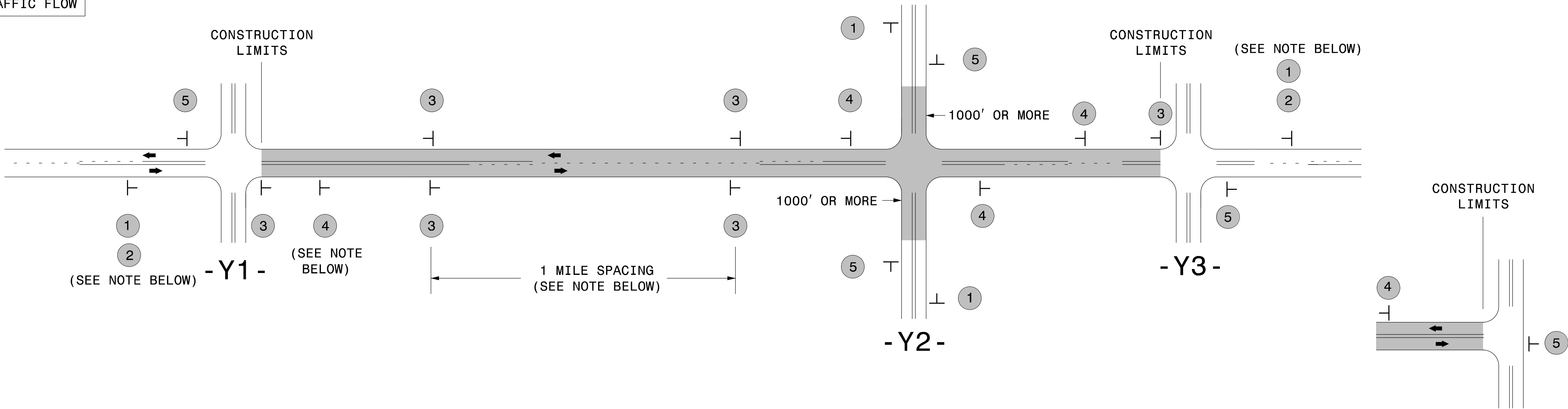
SHOULDERS TO BE DONE BY STATE FORCES

SIGNING FOR RESURFACING PROJECTS

LEGEND

STATIONARY SIGN


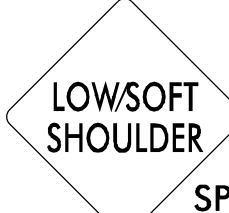
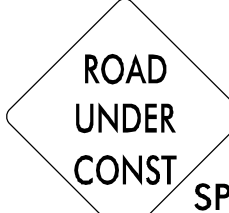
DIRECTION OF TRAFFIC FLOW



TEE INTERSECTION

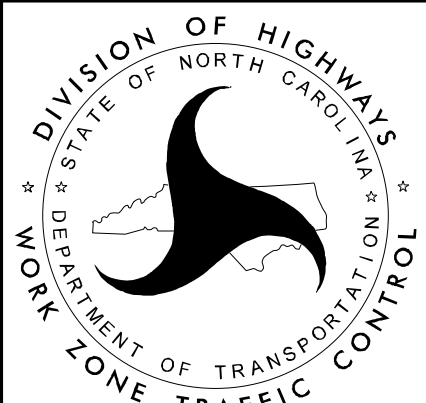
MAINLINE (-L-) SIGNING

-Y- LINE SIGNING

SIGNING NOTES AND PLACEMENT PER DIRECTION	<div>1</div> <div>2</div> <div><div>W20-1 48" X 48"</div></div> <div><div>NEXT XX MILES</div><div>W7-3aP 24" X 18"</div></div> <div>PLACE 1000' PRIOR TO BEGINNING OF CONSTRUCTION LIMITS. ONLY USED ON -Y- LINES IF RESURFACING LIMITS EXTEND 1000' ALONG -Y- LINE.</div> <div>#2 SIGN ONLY USED WHEN CONSTRUCTION LIMITS ARE 2 OR MORE MILES IN LENGTH. ROUND UP TO NEXT WHOLE NUMBER.(NO FRACTIONAL OR DECIMAL NUMBERS)</div>	NO REQUIRED STATIONARY SIGNING FOR THE FOLLOWING -Y- LINE CONDITIONS: 1) LESS THAN 1000' OF RESURFACING ALONG -Y- LINE 2) SUBDIVISION ROADS 3) DEAD END ROADS WHEN PAVING/CONSTRUCTION ACTIVITIES PROCEED ACROSS AN UNSIGNED -Y- LINE, PORTABLE ADVANCE WARNING SIGNS SHALL BE USED ALONG THE -Y- LINE AS SHOWN BELOW. REMOVE UPON COMPLETION OF WORK.
	<div>3</div> <div><div>SP 13107 48" X 48"</div></div> <div>- PLACE INITIALLY AT THE CONSTRUCTION LIMITS AND SPACE 1 MILE APART THEREAFTER. - AT TEE INTERSECTIONS INSTALL INITIALLY 1/2 MILE FROM INTERSECTION AND SPACE 1 MILE APART THEREAFTER.</div>	
	<div>4</div> <div><div>SP 13106 48" X 48"</div></div> <div>- THESE ARE FOR -Y- LINES THAT ARE "THROUGH" ROADWAYS. - DEAD END AND SUBDIVISION ROADS ARE NOT "THROUGH" ROADWAYS. - INSTALL 500' +/- FROM EACH -Y- LINE APPROACH AS SHOWN ABOVE. - FOR MULTIPLE -Y- LINES THAT ARE SEPARATED BY 0.25 MILES OR LESS, TREAT AS A SINGLE UNIT AND INSTALL WITHIN 500' OF EACH APPROACH. - A MAXIMUM OF 2 SIGN SETS PER MILE. DO NOT INSTALL WHEN -Y- LINES ARE WITHIN 0.5 MILES FROM "END ROAD WORK" SIGN. - FOR TEE INTERSECTIONS, INSTALL WITHIN 500' +/- OF THE INTERSECTION ALONG -L- LINE.</div>	
	<div>5</div> <div><div>END ROAD WORK</div><div>G20-2 A 48" X 24"</div></div> <div>PLACE 500' FOLLOWING THE END OF CONSTRUCTION LIMITS OR AS SHOWN WHEN WORK ENDS AT A 3-WAY TEE INTERSECTION.</div>	
	THE ABOVE SIGNS ARE ALL THAT ARE REQUIRED FOR A CONTRACTOR TO BEGIN A RESURFACING CONTRACT. ANY ADDITIONAL SIGNS REQUESTED BY NCDOT DIVISIONS SHALL BE INSTALLED WITHIN 7 BUSINESS DAYS OF THE START OF CONTRACT WORK.	

MAPS LESS
THAN 2 MILES

FOR RESURFACING MAPS WITH CONSTRUCTION LIMITS LESS THAN 2 MILES IN LENGTH, NO STATIONARY SIGNS ARE
REQUIRED. USE PORTABLE "ROAD UNDER CONSTRUCTION" OR "ROAD WORK AHEAD" SIGNS IN LIEU OF STATIONARY
ADVANCE WARNINGS SIGNS.



ADVANCE WARNING SIGNS
FOR
RURAL AND SUBURBAN
2-LANE ROADWAY
RESURFACING

PROJECT NO.	SHEET NO.	TOTAL NO.
6C.024127, 6C.024128	1	1

SUMMARY OF QUANTITIES

												1011000000-N	1519000000-E	1575000000-E	4457000000-N
PROJECT NO	COUNTY	MAP NO	ROUTE	DESCRIPTION	TYP NO	LANES	LANE TYPE	LENGTH	WIDTH	BEGIN MP	END MP	FINE GRADING	SURFACE COURSE, S9.5B	ASPHALT BINDER FOR PLANT MIX	TEMPORARY TRAFFIC CONTROL
								MI	FT			LS	TONS	TONS	LS
6C.024127	Columbus	1	SR-1565 / TATUM RD	FINE GRADE AND PAVE	1	2		0.42	18	0	0.42	0.39	742	48	0.53
TOTAL FOR PROJ NO. 6C.024127								0.42				0.39	742	48	0.53
6C.024128	Columbus	2	SR-1819 / JUSTICE FLYNN RD	FINE GRADE AND PAVE	2	2		0.65	18	0.25	0.9	0.61	666	43	0.47
TOTAL FOR PROJ NO. 6C.024128								0.65				0.61	666	43	0.473
GRAND TOTAL								1.07				1.00	1,408	91	1.000